

Management in Hong Kong to the Contracting Parties at the International Atomic Energy Agency Headquarters in Vienna.

Specialised Services

Child Assessment Service

The Child Assessment Service (CAS), aiming at contributing to the rehabilitation of children with developmental-behavioural problems or disorders through a multidisciplinary team approach, operates a total of six centres in Kowloon and New Territories to provide assessment for children aged under 12.

The team, comprising paediatricians, public health nurses, clinical psychologists, social workers, speech therapists, physiotherapists, occupational therapists, audiologists and optometrists, works together to:

- provide comprehensive physical, psychological and social assessment for children with developmental anomalies;
- formulate rehabilitation plan after developmental diagnosis;
- assist to arrange appropriate pre-school and school placements for training, remedial and special education where necessary; and
- provide interim support to parents and the children through counselling, talks and support groups.

In the spirit of its vision, mission and values, CAS is committed to strive for improving public awareness

公約》締約方會議，向締約方各國代表介紹中國香港的履約情況。

專科服務

兒童體能智力測驗服務

兒童體能智力測驗服務，旨在協助有發展障礙及行為問題的兒童康復；透過綜合專業隊伍的模式，在九龍及新界地區共設有六間中心，為12歲以下的兒童進行評估。

由兒科醫生、公共健康護士、臨床心理學家、社會工作者、言語治療師、物理治療師、職業治療師、聽力學家及視光師組成的專科人員隊伍致力：

- 為有發展問題的兒童提供全面的體能、心理及社交能力的評估；
- 在發展診斷後制定康復計劃；
- 在有需要時協助安排適當的學前及在學訓練、糾正及特殊教育編班；以及；
- 透過輔導、講座和互助小組為家長及兒童提供短期協助。

兒童體能智力測驗服務將堅守其理想、使命及信念，努力接觸更多家長及康復服務領域

and practice standards by reaching more parents and workers in the rehabilitation field to the benefit of children with developmental challenges.

The number of new clients received were 7 206 and a total of 60 483 assessment sessions were conducted over the year.

CAS continues to streamline coordination of assessment and placement service (including interim support at clinic and community settings) with respective service providers. It also continues to strengthen the public and professional education activities.

To promote public awareness and attitudes towards developmental disabilities in children and their special education needs, Education Bureau and CAS, with the support of Subsidised Primary School Council, Hong Kong Aided Primary School Heads Association and Union of Government Primary School Headmasters and Headmistresses, had jointly organised 'An Inclusive School – It All Begins with Our Hearts' – the video production contest and young anchor broadcasting contest in all primary schools in 2008/09. The contests aimed to help students, parents and teachers consolidate their experience and knowledge in supporting students with special educational needs, and to enable the public to know and be more willing to accept them.

的工作人員，從而提高公眾的認識及服務的水平，為有發展困難的兒童謀取福祉。

本年內共處理了7 206宗新症，所提供的評估服務共有60 483節。

兒童體能智力測驗服務已繼續與相關的服務提供者簡化評估及安排服務的協調工作(包括診所及社區環境所提供的短期協助)，亦會繼續加強公眾及專業教育活動。

為加強社會人士對兒童發展障礙及融合教育需要的認識和接納，教育局、兒童體能智力測驗服務及津貼小學議會、香港資助小學校長會、官立小學校長協會在二零零八/零九年度在全港小學舉辦了以「共融校園——一切由心開始」為主題的短片創作比賽及愛心小主播比賽，旨在幫助家長，老師及同學分享支援有特殊教育需要學生的經驗和心得，以提升公眾對各類特殊教育需要的認識及對個別差異的尊重及接納。



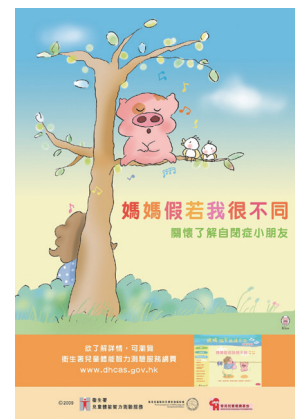
CAS, Education Bureau, together with Radio Television Hong Kong have also jointly produced a series of 10 episodes of the TV programme 'Parenting' to share the real-life experiences of parents taking care of their children with developmental disabilities. It is hoped that real-life cases in 'Parenting' can arouse the empathy of the public and enable them to have a better understanding of children with special needs. The programme was broadcasted at ATV home channel starting from 31 May and has been rated the 13th out of the 20 most appreciated local TV programme in the '2009 Television Programme Appreciation Index Survey' conducted by the Hong Kong University.

兒童體能智力測驗服務，教育局亦聯同香港電台電視部製作了一連十集的電視節目「天下父母心」，分享有關父母照顧有發展障礙的兒童及青少年的真實個案，希望透過真人真事能令公眾產生同理心，並明白有發展障礙的兒童及青少年的特殊需要。此節目於五月三十一日起在亞洲電視本港台播出，並在香港大學所進行的「2009電視節目欣賞指數調查」中，成為最受欣賞的二十個本地製作節目中的第十三位。



The results of a Thematic Household Survey on 'Public Awareness and Attitudes towards Developmental Disabilities in Children' released in September 2008 revealed that public awareness of developmental disabilities in children were less than satisfactory, albeit there were growing concerns in the society about the problem. CAS has therefore launched a mini website and published a booklet 「媽媽假若我很不同」 on Autistic Spectrum Disorder (ASD) in September 2009 to promote understanding and acceptance among the public and enable the integration of ASD children into the community. Feedbacks from the public concerning the website and the booklet have been very positive.

二零零八年九月公布的「公眾人士對兒童發展障礙的認識和態度」的主題性住戶統計調查結果反映，儘管社會對兒童發展障礙問題日益關注，但公眾人士對兒童發展障礙的認識仍不足夠。因此，兒童體能智力測驗服務於二零零九年九月推出了介紹自閉症的「媽媽假若我很不同」網頁及書刊，藉以推廣公眾對自閉症兒童的認識，關懷及接納。公眾對此網頁及書刊的反應十分熱烈。



CAS continues to expand its specialisation in various subspecialties, including anxiety and mood disorders, physical and cognitive neurorehabilitation in 2009. CAS provides active support to the parent self help work for children with attention deficit / hyperactivity disorders and autism, in addition to ongoing work for physical impairment, dyslexia and hearing impairment.

Fact sheets on nine common childhood developmental problems have received positive feedback. One series is developed for professional education and information, with another series for information to public. The Fact sheets for public were made available on CAS website in early 2009.

Clinical Genetic Service

Clinical Genetic Service provides territory-wide genetic services, including diagnosis, counselling and prevention of genetic diseases. It comprises the Genetic Counselling Unit and the Genetic Screening Unit.

Genetic Counselling Unit deals with diagnosis of over a thousand different types of genetic diseases. It receives support from the Genetic Laboratory in performing investigations on cytogenetics, biochemical genetics and molecular genetics. Chromosome studies and molecular genetic

兒童體能智力測驗服務在二零零九年繼續致力擴展各個不同範疇的專業發展，包括焦慮及情緒困難和腦神經復康。此外，兒童體能智力測驗服務亦積極支援家長自助工作，並以支援患有專注力失調／過度活躍症及自閉症兒童的家長工作為重點。而有關肢體殘障、讀寫障礙和弱聽的工作亦持續進行。

九種常見兒童發展問題的資料單張一直廣受好評。其中一個系列是為專業教育及資訊而設，另一系列則向公眾人士提供資料。上述資料單張已在二零零九年年初，上載兒童體能智力測驗服務的網站，以供大眾參閱。

醫學遺傳科

醫學遺傳科提供全港性的遺傳服務，包括遺傳病的診斷、輔導及預防。該科由遺傳輔導組及遺傳篩選組所組成。

遺傳輔導組就逾千種遺傳病進行診斷，又在遺傳學化驗所的支援下進行細胞遺傳學、生化遺傳學及分子遺傳學的化驗。化驗個案中以染色體研究和分子遺傳學化驗居多，普遍的化驗原因包括：多發性先天異常、慣性