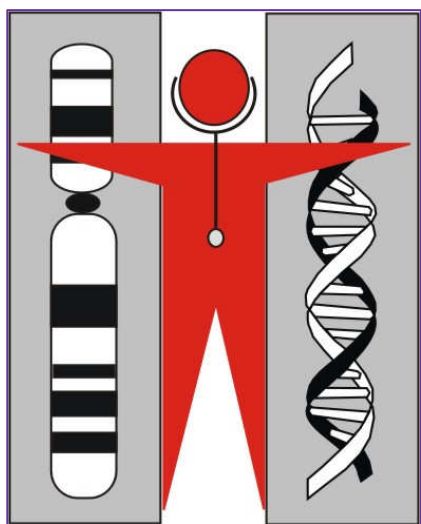


# Clinical Genetic Service Information Leaflet on Newborn Screening



## The Genetic Screening Unit of Department of Health provides newborn screening

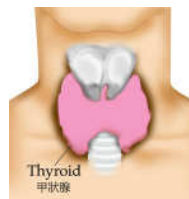
### Target:

Babies born in Hong Kong  
public hospitals



### Conditions screened:

1. Glucose-6-phosphate Dehydrogenase (G6PD) Deficiency
2. Congenital Hypothyroidism



### Reason:

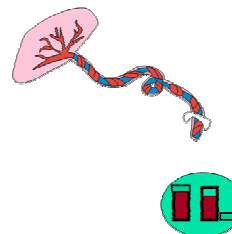
- No obvious symptoms at the early stage
- Early detection and treatment could help to prevent physical and mental impairment in these babies

**Fee:** Free

**Method:** Testing baby's umbilical cord blood

### If result normal :

Parents will **not** be informed



### If result abnormal:

Parents will be informed within 2 weeks:

#### 1. Confirmed Glucose-6-phosphate Dehydrogenase (G6PD) Deficiency

Parents will be informed and counselled by Genetic Screening Unit or hospital staff

#### 2. Congenital Hypothyroidism

##### \*Suspected Congenital Hypothyroidism

Parents will be informed by Genetic Screening Unit or hospital staff for reassessment, including blood taking and physical examination



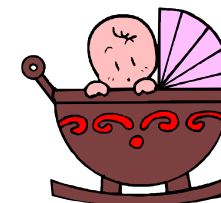
##### \*Confirmed Congenital Hypothyroidism

Baby will be referred to the hospital for further management

### Babies born in private hospitals

Are also entitled to the screening

Parents could consult their Obstetricians or Paediatricians for further information



Hotline : 2361 9979

Website: [http:// www.cgs.dh.gov.hk](http://www.cgs.dh.gov.hk)



Clinical Genetic Service  
Department of Health



ISO 9001 : 2008  
Certificate No.: CC 3455



ISSUED BY IQNET